



Easter Services:

Palm Sunday (29th March):

- 8.00am BCP Communion in Whitchurch
 - 9.30am Holy Communion in Fauls, Prees and Tilstock
 - 9.30am Blessing of the palms in St George's RC Church W/ch with procession
 - 10.00am Holy Communion in Whitchurch
 - 11.00am Holy Communion in Edstaston and Whixall
 - 6.30pm *Fauré Requiem* sung by the Community Choirs of Wem and Whitchurch in St Alkmund's, W/ch
- Monday 7.30pm Compline in Edstaston
Tuesday 7.30pm Compline in Fauls
Weds 7.30pm Compline in Tilstock

Maundy Thursday

- 7.30pm Communion and Stripping of the Altar in Prees
- 7.30pm *Churches Together* Service led by the Beacon Church in the Civic Centre, W/ch

Good Friday

- 10.00am Service in Prees "The Way of the Cross"
- 10.30am Meditative Service in St Alkmund's
- 12 noon *Churches Together* Walk of Witness starting from Tesco's car park, W/ch

Easter Eve

- 6.00pm Confirmation Service in St Alkmund's

Easter Day

- 8.00am BCP Easter Communion in Whitchurch
- 9.30am Easter Communion in Fauls, Prees and Tilstock
- 10.00am Easter Communion in Whitchurch
- 11.00am Easter Communion in Edstaston and Whixall
- 6.30pm Easter Evensong in Whitchurch

The Priesting of our Curate, Rich Clarkson

This will take place at 7.00pm in Shifnal on Saturday 20th June. We will organise a coach and will be asking for numbers in May. It is an important and joyful occasion and we hope that many congregation members will be able to come. Once priested, Rich is authorised to absolve and bless in church services and in meetings with individuals and to preside at Holy Communion services.

Looking ahead (more details nearer the time)

Monday 4th May

Walk and picnic

Sunday 10th May:

Special services for **Christian Aid** (Civic Centre, W/ch at 10.30am) and **Rogation** (time tba; at Vale Farm, Fauls)

Thursday 14th May (Ascension Day):

Deanery Communion at 7.30pm in St Alkmund's, W/ch

Sunday 31st May:

8.00am BCP Communion in St Alkmund's, W/ch No other 'usual' services that day
Special SN6 event for all parishes

TEAM TIMES



February 2015

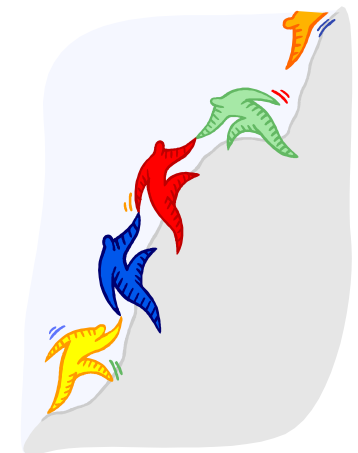


S Shropshire
N North
6 Six

Edstaston, Fauls, Prees, Tilstock, Whitchurch & Whixall

Shropshire North Six or SN6 is the 'trial name' for our group of six Church of England Parishes as we move forward in working together.

This edition of Team Times gives an update on what has been happening and where we're up to.



Looking Outwards:

Wear it Woolly

All six churches joined in with "Wear it Woolly" on Sunday 1st February. People were asked to donate £1.00 for the 'privilege' of wearing something woolly at the church services. £187.67 was raised (do fingerless gloves only count as 67p???) for Shropshire Age UK. The money has been sent to them for their work in our area of keeping elderly people warm and well during the cold winter months. Thanks to all involved. Perhaps we'll have a prize next year for the most striking piece of clothing at each service!



The Churches Together Foodbank

The Foodbank committee continue to express their thanks for all the support of prayer, food items, money and time given by volunteers. This has meant that practical help has been received by over 1000 clients.

The Money Management Course

This course offers basic help in budgeting with the aim of stopping individuals and families slide into debt. Four people have trained with "Churches against Poverty" and the course has been run twice so far.



Strengthening our Christian service

Learning Quilt

As part of the Learning Quilt, sessions have been offered on Tuesday evenings at Prees Vicarage about pastoral conversations. These conversations can be crucial in helping people in their Christian discipleship, especially in times of need such as illness or bereavement. Any conversation, however, at any time might be used by the Holy Spirit and it's important to be alert to this in everyday life. There is still time to attend sessions on 17th & 24th February (7.30pm).

Ash Wednesday Services

There will be two services of Communion and Imposition of Ashes on 18th February. The morning one will be at Whixall at 11.00am and the evening one will be in Whitchurch at 7.30pm. As stated in the CoE introduction to Ash Wednesday:

Receiving the Sign of the Cross in ash at the beginning of Lent is one way of remembering that we belong to Christ through our baptism and that He calls us to repent of our sins, to accept the assurance of forgiveness proclaimed in the gospel, and so grow in faith and devotion to Him.

Lent lunches

These will take place in Fauls on Tuesdays and in Tilstock & Whitchurch on Thursdays – see the pew sheet for more information. Times of fellowship and prayer are important, and some of these lunches will also raise funds for Christian Aid.

Meditative services on Tuesdays at 6.30pm in March

All are invited to a short meditative service for Lent on Tuesdays 3rd, 10th, 17th in St Alkmund's, Whitchurch, but at The Rectory on the 24th. The service will end by 6.55pm and offers an opportunity for quiet reflection on Jesus and his ministry to us.

Mossy Church

Mossy Church, our fledgling group which meets approximately monthly to explore how we can listen to God in and through nature, is meeting again at Brown Moss Countryside Site on Saturday 28th February from 2.30-4pm. All ages are welcome (dogs too!), if you're not sure what it's all about you can speak to Rich Clarkson (01948 258137), visit northshropshiremossychurch.wordpress.com or just turn up!

Holy Week Confirmation

Two groups are continuing to meet in preparation for Confirmation. One is a group of young people, the other of adults.

The Confirmation Service is at 6.00pm on Easter Eve (4th April) with

Bishop Mark in St Alkmund's, Whitchurch. It would be lovely to have congregation members from all our 6 parishes present. Please do come and support the confirmands as they take this important step of commitment.

